



Commercial & Industrial Asset
SOLUTIONS
For Your Business

Construction Case Studies



Location:

Rhome, Texas

Date:

September 2017

Industry Assets:

Mid-sized yellow iron and transportation assets

A 'FOR SALE' advertisement for construction equipment. The top section has a dark blue background with 'FOR SALE' in large white letters. Below this, it says 'Available for Immediate Purchase | Rhome, Texas, USA'. A circular badge on the left says 'LATE MODEL'. The main text reads '90+ Units of Well-Maintained Yellow Iron & Transportation Equipment'. Below the text is an aerial photograph of a large outdoor yard filled with various pieces of yellow construction equipment, including excavators, graders, and trucks. A red 'KE' logo is visible in the bottom right of the photo. In the bottom left of the photo, there is a circular icon with an arrow and the text 'Take a Virtual Tour Online'. At the bottom of the advertisement, there are logos for 'Hilco Industrial' (with the tagline 'A Hilco Global Company. Invested in Your Success.' and website 'www.hilcoind.com') and 'Gordon Brothers'.

- » KEC operated a full collection of mid-sized yellow iron and transportation assets capable of a broad variety of commercial and residential applications.
- » 90+ units in fleet including graders, dozers, excavators, loaders, vac trucks, semi tractors, trailer and pick ups.
- » All assets were marshaled to a yard in Rhome, TX. All the equipment was detailed and cleaned out.
- » Hilco provided a net minimum return guarantee for the sale of the asset pool.
- » Hilco sold the assets through a series of private treaty sales and a live auction.

Video link - <https://www.youtube.com/watch?v=Uu4ckLJvCM0>

Transportation Case Studies



Location:

Pleasanton, TX and Saucier, MS


Date:

January 2017

Industry Assets:

Late Model Mid-Size CAT, Komatsu & Grove Equipment

- » (30) unit fleet including dozers, excavators, wheel loaders, multi-terrain loaders, loader/backhoes, crawler pipelayers, drum roller, rough terrain cranes and forklifts.
- » Assets were marshaled to (6) locations in TX, MS, OK, GA and LA.
- » Hilco provided a net minimum return guarantee for the sale of the asset pool.
- » Hilco sold the assets through a series of private treaty sales and an online auction.



Bid Online Only at
HilcoBid

ONLINE AUCTION

LATE MODEL, MID-SIZE CONSTRUCTION EQUIPMENT

BIDDING OPENS
Thursday, January 19th
BIDDING CLOSES
Thursday, January 26th
PREVIEW
Wednesday, January 18th
9:00 AM to 4:00 PM CT
Or By Appointment



ROUGH TERRAIN CRANES
1 - GROVE MODEL RT1760E, (2008), 60-Ton with Hook & 285-Lb. Ball, 5-Sheave Hook Block, PAT LMI System, 33' to 56' Swing Away Extendable Jib, Outriggers
1 - GROVE MODEL RTS30E (New 2007), 30-Ton, Outriggers (Location: Carrollton, GA)

EXCAVATORS
1 - KOMATSU PC390LC-10, (New 2013), 40" Bucket w/ Quick Connect, Extended Hydraulic & Powertrain Warranty (Location: Saucier, MS)
2 - KOMATSU MODEL PC360LC-10, (New 2013), 48" / 40" Bucket, Wet Kit, Extended Hydraulic & Powertrain Warranty (Location: Saucier, MS)
3 - KOMATSU MODEL PC290LC-10, (New 2013), 48" / 36" / 24" Bucket, Hydraulic Thumb, Wet Kit, Extended Hydraulic & Powertrain Warranty (Location: Saucier, MS)
1 - KOMATSU MODEL PC240LC-10, (New 2013), 36" Bucket, Extended Hydraulic & Powertrain Warranty (Location: Saucier, MS)
3 - CAT MODEL 320DL, (New as 2011), A/C Cab, 31" Track Width, (1) w/42" Bucket, (1) w/44" Bucket, (1) w/36" Bucket
1 - CAT MODEL 325DL, (New 2008), with 36" Bucket, A/C Cab, 31.5" Track Width
1 - CAT 321C, (New 2007), Auger Drive Attachment, A/C Cab, 31" Track Width, Auxiliary Hydraulics, (1) 18" x 10' and (1) 24" x 10' Auger Bits

DRAGLINE
1 - BUCYRUS ERIE MODEL 450W, Walking Dragline, CAT Engine (Location: Slidell, LA)

WHEEL LOADERS
1 - CAT MODEL 930H, (New 2008), with 3.3-Cubic Yard (99") Bucket, A/C Cab
1 - CAT MODEL 928HZ, (New 2007), with 2.9-Cubic Yard (99") Bucket, A/C Cab

LOADER BACKHOES
1 - CAT MODEL 420E 4X4, (New 2011), with 89" Front & 24" Rear Buckets, Canopy
2 - CAT MODEL 420E, (1) (New 2008), with 95" Front & 24" Rear Buckets, Canopy; (1) (New 2007), with 89" Front & 24" Rear Buckets, Canopy


MULTI-TERRAIN LOADERS
1 - CAT MODEL 257B2, (New 2008), with 74" Bucket w/ Edge, Canopy, Auxiliary Hydraulics, 15" Track Width
3 - CAT MODEL 259B3, (New 2012), with 74" Bucket, Canopy, Auxiliary Hydraulics, 18" Track Width
1 - CAT MODEL 289C, (New 2009), with 74" Bucket w/ Edge, Canopy, Auxiliary Hydraulics, 18" Track Width

DRUM ROLLER
1 - CAT MODEL CS54 VIBRATORY SMOOTH, (New 2008), with 84" Single Drum, 84" Padfoot Shell, Canopy

CRAWLER PIPELAYERS
3 - CAT MODEL D6M LGP, (New 1998), with 20' Side Boom, Hydraulic Draw Works, Canopy, 34" Track Width, LGP


TELESCOPING FORKLIFTS
1 - CAT MODEL TL943, (New 2007), 48" Forks, 52" Carriage, Auxiliary Hydraulics, Rotating Q/C
1 - CAT MODEL TH514, (New 2012), Cab, A/C, Foam Filled Tires, Hyd Q/C, Stabilizers, 2625 Hours (Location: Tulsa, OK)

BOTTOM DUMP TRAILER
1 - DAKOTA TANDEM AXLE (New 2013), (Location: Midland, TX)



EQUIPMENT As New as 2015

New 2013 w/Extended Warranties



OVER 35 OFFICES THROUGHOUT NORTH, CENTRAL & SOUTH AMERICA, EUROPE, MIDDLE EAST, ASIA, AUSTRALIA

A Hilco Global Company
Vested in your Success



Location:
San Angelo, TX

Date:
August 2015

Industry Assets:
Late Model Heavy Haul Assets

- » Butch's Trucking was primarily focused on oil & gas rig moving activities and operated four of the largest and newest fleets of rig moving equipment in Texas and New Mexico.
- » Butch's Crane Services division offers 100 to 275-ton cranes for all rig moving needs.
- » Assets consisted of heavy haul transportation fleet including winch trucks, gin trucks, 4/5/6 Axle lowboys, wheel loaders, all terrain cranes, and crawler cranes.
- » Hilco provided a net minimum return guarantee for the sale of the asset pool.
- » Hilco sold the assets through a series of private treaty sales and a live auction.

AUCTION

Live & Webcast | 114 January 2016 10:00 AM CT | Midland, Texas

Heavy Haul Fleet
Trucks, Trailers,
Cranes & Loaders

LATE MODEL

Hilco Industrial
www.hilcoind.com

BUTCH'S TRUCKING

A Hilco Global Company
Vested in Your Success



Hilco Technologies, Inc
OILFIELD SERVICES

Location:

Oklahoma City, OK, and Tuleta, TX

Date:

November 2015

Industry Assets:

Oilfield Well Site Support Assets

- » Hilco Technologies, Inc. was a Houston, TX based oilfield services company with operations in Texas, Oklahoma, Ohio and West Virginia.
- » The company was mainly focused in horizontal drilling and hydraulic fracturing within the United States' active shale and unconventional "tight oil" plays.
- » Assets consisted of flow back water transfer equipment, power generators, semi tractors and trailers, rock trucks, excavators, loaders, graders and flow back pipe.
- » Hilco was retained on a fee basis and was able to sell the entire package of assets to one private treaty buyer.

AUCTION

Online Only | 13 - 18 November 2015 | Oklahoma & Texas

**Oilfield Well Site Support Assets
Flowback Water, Transfer Equipment,
Generated Power & Construction Equipment**

Hilco Industrial
www.hilcoind.com

Hilco Technologies, Inc
OILFIELD SERVICES

A Hilco Global Company
Vested in Your Success



Location:

Saskatoon, Saskatchewan, Canada

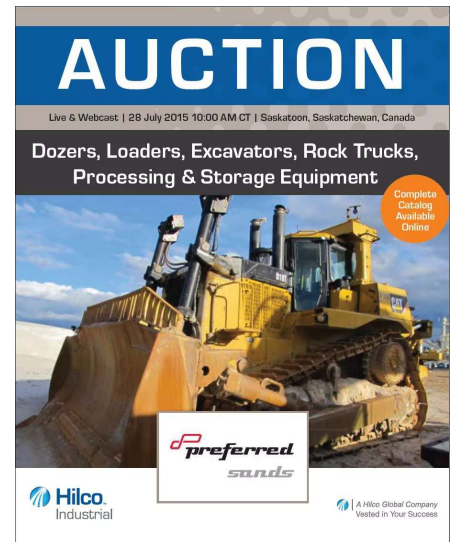
Date:

July 2015

Industry Assets:

Dozers, Excavators, Haul Trucks and Wheel Loaders

- » Preferred Sands was a premium grade proppant facility and one of North America's largest manufacturers and providers of frac sand for oil and natural gas companies in the hydraulic fracturing industry.
- » Assets consisted of dozers, excavators, haul trucks and wheel loaders. There was also process plant and storage equipment including conveyors, dryers, sorters, screens, bed dryers and silos.
- » Hilco purchased the assets outright and resold on their own behalf through a series of private treaty sales and live auctions.





Location:
Ft. Worth, TX

Date:
October 2015 / June 2016

Industry Assets:
Late Model Heavy Haul Assets

A vertical advertisement for heavy haul assets. At the top, a blue banner reads "FOR SALE" in white. Below it, a grey bar says "Available for Immediate Purchase | Fort Worth, Texas". The main title "Heavy Haul Assets" is in white on a dark grey background. The Pilot Thomas Logistics logo is centered, with a circular badge on the left that says "LATE MODEL". The bottom half of the ad shows a photograph of several white heavy haul trucks parked in a lot. At the bottom left is the Hilco Industrial logo and website "www.hilcoind.com". At the bottom right is the Hilco Global Company logo with the tagline "Wasted in Your Success".

- » Pilot Thomas is a premier provider and transporter of fuel, lubricants and chemicals to the marine, mining and industrial markets.
- » Assets consisted of over 600 unit heavy haul transportation fleet including truck tractors, trailers, tank wagons and service vehicles.
- » Hilco provided a net minimum return guarantee for the sale of the asset pool.
- » First package sold by Hilco to a single private treaty buyer.
- » Second package sold via privately treaty sales



Location:
Union City, OK

Date:
April 2016

Industry Assets:
Late Model Peterbilt 367 Tractors

FOR SALE
Available for Immediate Purchase | Union City, Oklahoma

Peterbilt 367 Tractors

LATE MODEL

QUINTANA ENERGY SERVICES

Hilco Industrial
www.hilcoind.com

A Hilco Global Company
Vested in Your Success

The advertisement features a blue header with 'FOR SALE' in white. Below it, a dark grey bar contains the text 'Available for Immediate Purchase | Union City, Oklahoma'. The main title 'Peterbilt 367 Tractors' is in white on a dark background. A central image shows a long line of white Peterbilt 367 tractors parked in an outdoor lot. An orange circular badge with 'LATE MODEL' is overlaid on the image. The Quintana Energy Services logo is in the bottom right of the image area. At the bottom left is the Hilco Industrial logo and website, and at the bottom right is the Hilco Global Company logo and tagline.

- » QES provided a wide range of completion, production and drilling services to land-based exploration and production customers operating in unconventional resource plays and conventional basins throughout the United States.
- » QES utilized an extensive fleet of Peterbilt 367 tractors for their internal transportation requirements while mobilizing pressure pumping, fracking, and well completion equipment throughout North America.
- » The fleet valuation exceeded \$17 million with an estimated \$27 million in acquisition cost.
- » Hilco performed the inventory audits, cataloged the assets and supervised the subsequent removal of 300+ rolling stock assets.
- » Hilco provided a net minimum return guarantee for the asset pool.
- » The fleet was monetized through a series of private treaty sales.



Location:
Multiple Locations

Date:
May 2013

Industry Assets:
Transportation fleet and traffic support equipment

- » Highway Technologies was the largest traffic safety management company in the United States. HT provided temporary and permanent traffic safety services including barrier walls, signage, guardrails, striping and related support equipment
- » HT took immediate and drastic measures to shutter over 35 nationwide locations in an expedited wind down strategy.
- » Hilco managed the disposition of 800 transportation assets and traffic support equipment with an estimated value of \$24 million.
- » Hilco performed inventory audits, cataloged the assets, marketed and supervised the removal of 50,000+ line items in a 90-day process.
- » All assets were sold through a series of privately negotiated sales specific to regional branches, including active jobsite assets.
- » Hilco Asset Protection provided security services during the sales process and through removal.

Hilco PRIVATE TREATY SALE!
AVAILABLE IMMEDIATELY

Pursuant to Case No. 13-11329 (KCM) United States Bankruptcy Court, District of Delaware



**Preview Information
By appointment only.
Multiple locations.**

Sale Information
Offers will be accepted for:
• All 32 locations as a complete national turnkey operation;
• One or more of the 32 branch locations as a turnkey operation;
• Bulk asset sales from one or more locations.
Offers for individual units are not considered at this time.

**Nation's Largest Highway Safety
Equipment Provider**
Turnkey Opportunities & Bulk Offerings

<ul style="list-style-type: none">• Solar Message Board• Portable Traffic Signal• Traffic Mobile Monitor• Traffic Controller• Remote Flagman• Towable Speed Awareness• Trailer• Striper Thermo/Epoxy• Guardrail Punch	<ul style="list-style-type: none">• Trucks - Fleet• Generators• Compressors• Arrow Board - Solar• Attenuator (Truck/Trailer Mounted)• Form Barrier Wall• Light Tower Towable• Light Balloon
---	--

32 Locations in: Arizona, California, Colorado, Florida, Illinois, Missouri, Montana, New Jersey, Nevada, Oregon and Texas

Earlier preview also available by appt., Contact Jody Bacque at 251.404.2367 or email jbacque@hilcoind.com

These are partial listings only. For more information on additional auctions or to subscribe to our email/mailing lists, visit

www.hilcoind.com

A buyer's premium is in effect • IL License #444.000215



Location:
Multiple Locations

Date:
Q1 – Q2 2012

Industry Assets:
Transportation fleet

- » Following multiple bankruptcy filings, Hostess Brands, Inc. hired Hilco to provide an integrated solution for maximizing asset values.
- » Hilco played a crucial role to the stakeholders by leveraging its considerable global expertise in the marketing and sale of various real estate, machinery & equipment and rolling stock assets.
- » Hilco Industrial implemented a highly expedited campaign to monetize over 12,000 transportation assets primarily utilized in Hostess' fleet of delivery tractors, trailers, dry vans, and rail storage cars
- » With an estimated value over \$30 million, the combined fleet assets were audited, cataloged, monitored and sold at locations across 34 states.
- » The expedited 90-day sale period concluded with a 60-day removal process at approximately 50 locations.
- » Hilco Asset Protection was engaged to secure the assets during the monetization process.

AUCTION
Live & Webcast | 19 February 2013 | Irving, Texas

Fleet of Tractors & Trailers **OVER 3,500 UNITS**

Hilco Industrial
www.hilcoind.com

Hostess

A Hilco Global Company
Welled in Your Success



Location:
San Angelo, TX

Date:
August 2015

Industry Assets:
Late Model Heavy Haul Assets

- » Butch's Trucking was primarily focused on oil & gas rig moving activities and operated four of the largest and newest fleets of rig moving equipment in Texas and New Mexico.
- » Butch's Crane Services division offers 100 to 275-ton cranes for all rig moving needs.
- » Assets consisted of heavy haul transportation fleet including winch trucks, gin trucks, 4/5/6 Axle lowboys, wheel loaders, all terrain cranes, and crawler cranes.
- » Hilco provided a net minimum return guarantee for the sale of the asset pool.
- » Hilco sold the assets through a series of private treaty sales and a live auction.

AUCTION

Live & Webcast | 114 January 2016 10:00 AM CT | Midland, Texas

Heavy Haul Fleet
Trucks, Trailers,
Cranes & Loaders

LATE MODEL

Hilco Industrial
www.hilcoind.com

BUTCH'S TRUCKING

A Hilco Global Company
Vested in Your Success